



Shepherdess Walk, Shoreditch, N1

BUTLER & STAG



Occupying the third floor of this former fashion factory on Shepherdess Walk is this stunning two bedroom loft apartment with a study measuring in excess of 1,000 sq. ft.



- Victorian Loft Apartment
- Two Bedrooms & Study
- Close To Shoreditch, Angel & Clerkenwell
- Regents Canal & Shoreditch Park
- High End Contemporary Finish
- Over 1,000 Sq. Ft.
- Old Street Station Nearby
- Furnished

Finished to an extremely high standard with no expense spared, the property boasts solid wood flooring throughout, high ceilings, large factory windows and doors and exposed brick work. Comprising a large living/entertaining space, separate high end German kitchen with Miele integrated appliances, two double bedrooms, study, stylish bathroom and separate w/c.

Located just moments from the creative and tech hub of Old Street, yet within easy reach of Angel's Upper Street, Vibrant Hoxton and Shoreditch, Clerkenwell and The City. A number of bars and eateries can be found along the nearby Regent's Canal and the open green spaces of Shoreditch Park are also close by. Ideally located for a number of transport links including Old Street station (Northern Line & National Rail) offering swift and direct links to the City and West End.

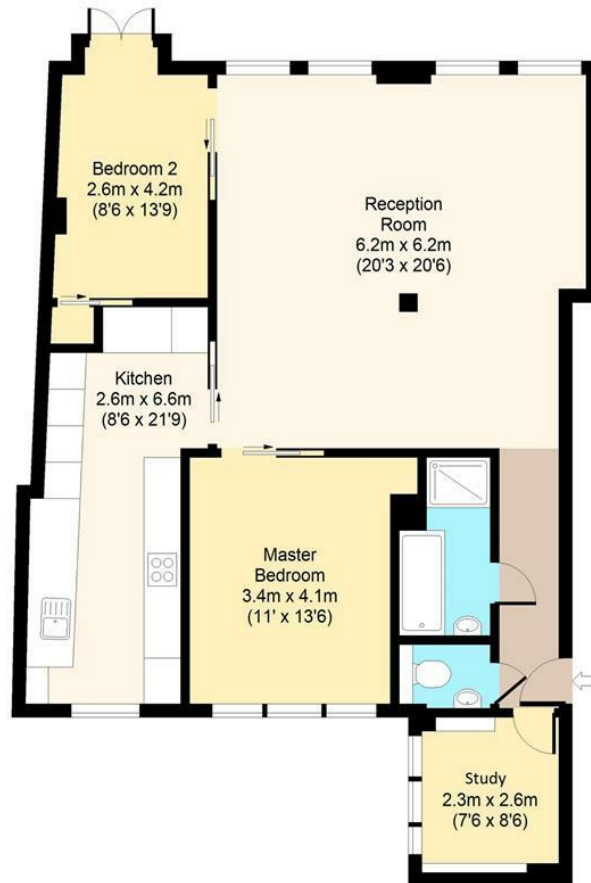




Shepherdess Walk, N1



Approx. 100 Sq. meters (1071 Sq. feet)



Total area: approx. 100 Sq. meters (1071 Sq. feet)
For illustration purposes only - not to scale

www.lpaplus.com

BUTLER & STAG

☎ 020 8102 1236

🏠 508 Roman Road, Bow, London, E3 5LU

✉ bow@butlerandstag.com

www.butlerandstag.uk

IMPORTANT NOTICE - These particulars have been prepared in good faith and they are not intended to constitute part of an offer or contract. We have not performed a structural survey on this property and the services, appliances and specific fittings have not been tested. All photographs, measurements, floor plans and distances referred to are given as a guide and should not be relied upon.